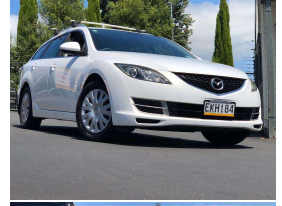
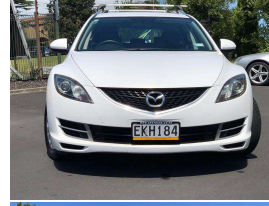


# 2008 Mazda 6 (ATENZA) GLX



## VEHICLE INFORMATION

### Cash Price

Includes GST

# \$8,479

+ on-road-costs of \$498

### Body

5 door, Station Wagon

### Odometer

159,000 km

### Engine

1998 cc

### Fuel Type

Petrol

### Transmission

Automatic, Front Wheel Drive

### Wheels

-

### VIN

JMOGH10F100103353

### Reg No.

EKH184

### Ext Colour

White

### History

NZ New, 2 owners

### Seats

5 seats

### Interior

-

### Audio

-

### Stock ID

4221

Finance this vehicle  
from only

# \$42.31

per week\*

Total Amount Payable

\$11,494.07



Gain peace of mind  
with Mechanical  
Breakdown Insurance.  
Ask us how.

### Exterior Features

### Interior Features

### Mechanical Features



Croydon Wholesalers, Phone 09 836 8314, Email sales@croydons.co.nz  
157 Central Park Drive, Henderson, Auckland 0610, New Zealand  
www.croydons.co.nz

\* Finance calculation based on a 48 month term, 30% deposit and with an example annual fixed interest rate of 13.95%. Actual interest rate may be higher or lower. Includes an establishment fee of \$432.00. Full term total amount payable of \$11,494.07. Estimate only, not an offer of finance. Terms, conditions and lending criteria apply.